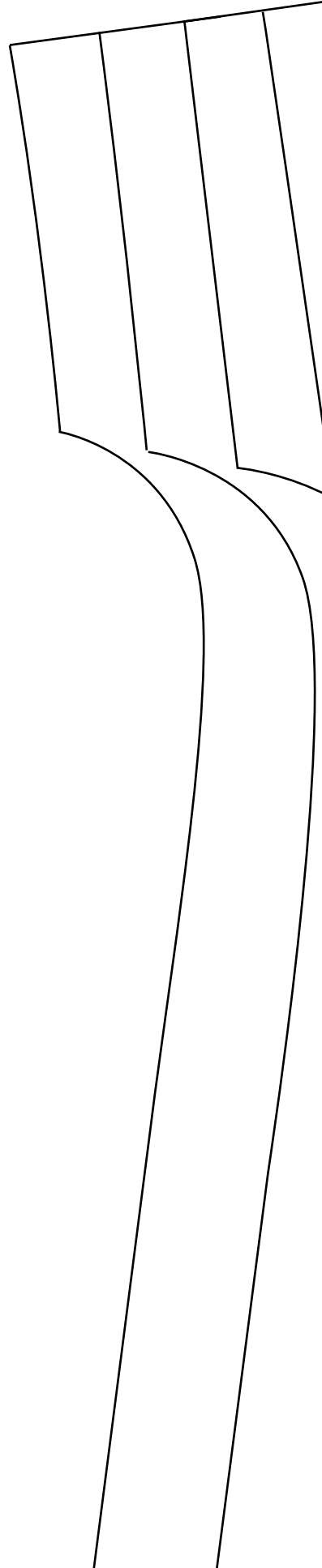


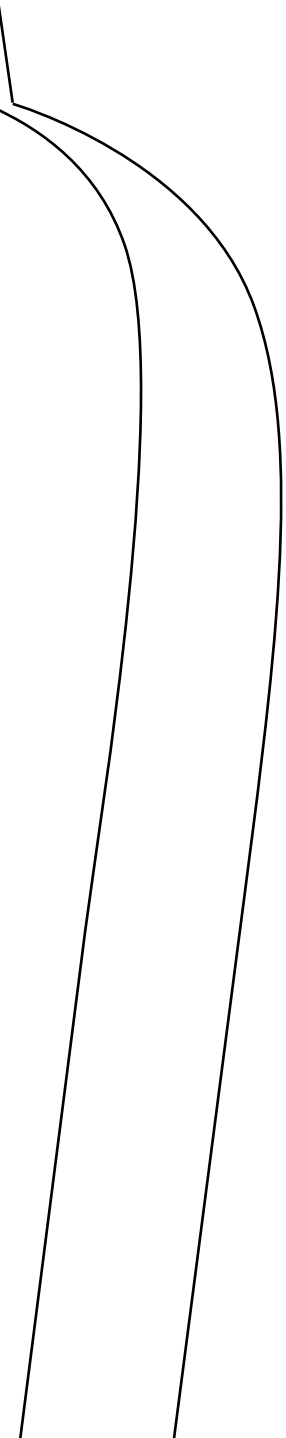
Esprit guerrier

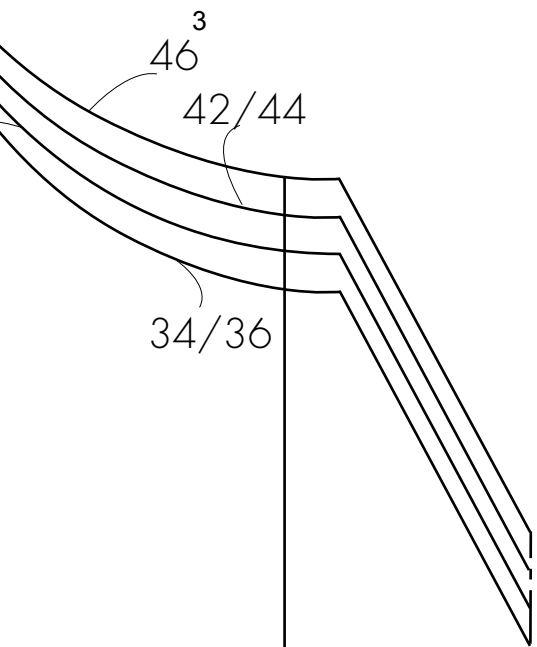
Patron à reconstituer

Nos patrons sont à imprimer sur du papier format A4.
Les pages sont numérotées. Les assembler bord à bord
avec du ruban adhésif. Il y a lieu de prolonger les lignes
d'une page sur l'autre avant de couper les patrons.



Esprit guerrier
Devant



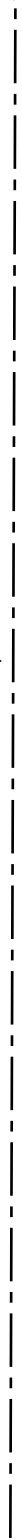


droit-fil

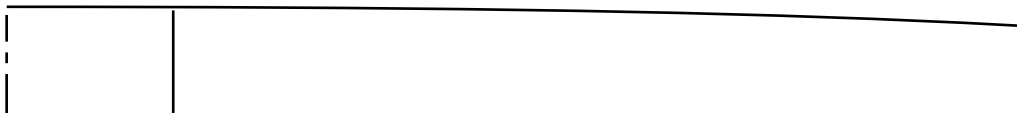


A vertical line with an arrowhead pointing downwards, indicating the direction of the 'droit-fil' (straight grain).

pliure milieu devant

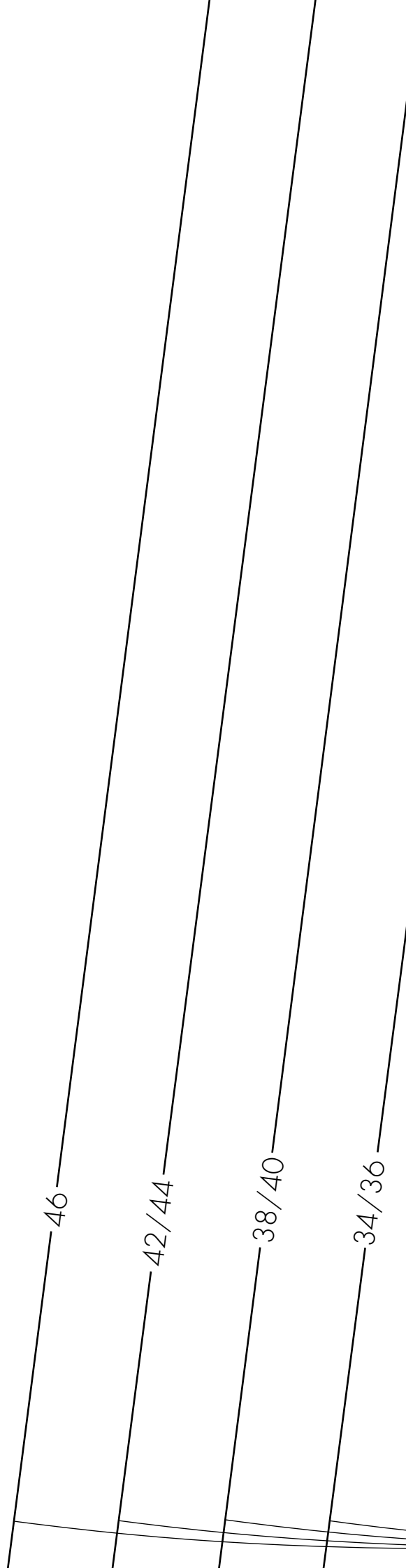


A vertical dashed line extending from the bottom of the curved fabric piece down to the bottom of the page, indicating the 'pliure milieu devant' (middle front fold).



pliure
milieu dos

42/44
38/40
34/36
46



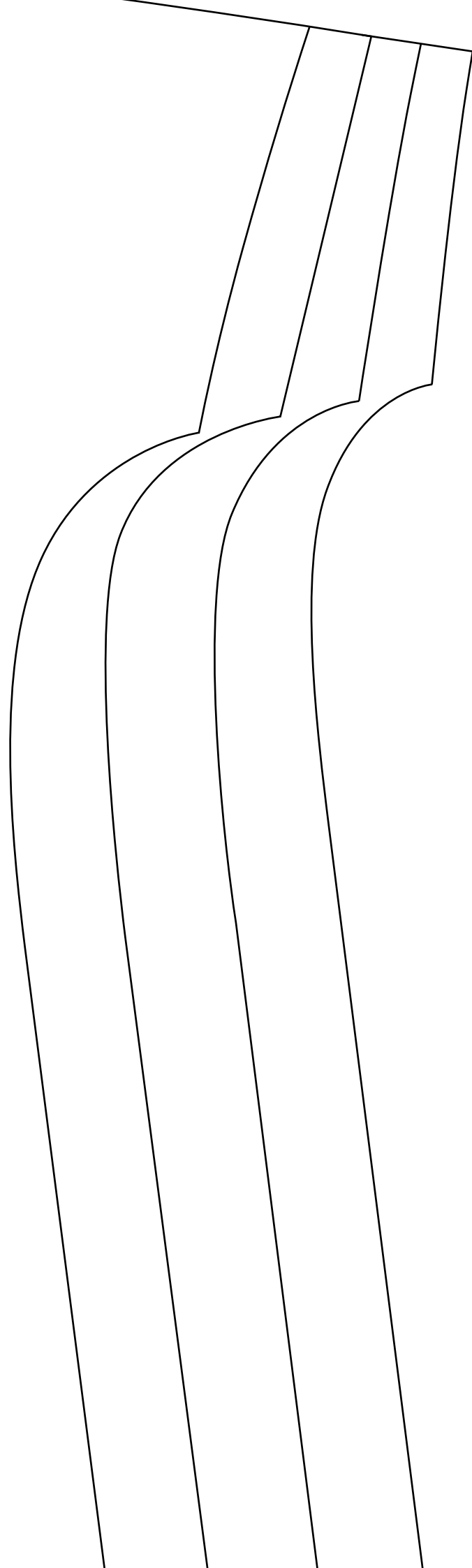
doublure

pliure milieu devant

pliure milieu dos

← droit-fil

Esprit guerrier
Dos

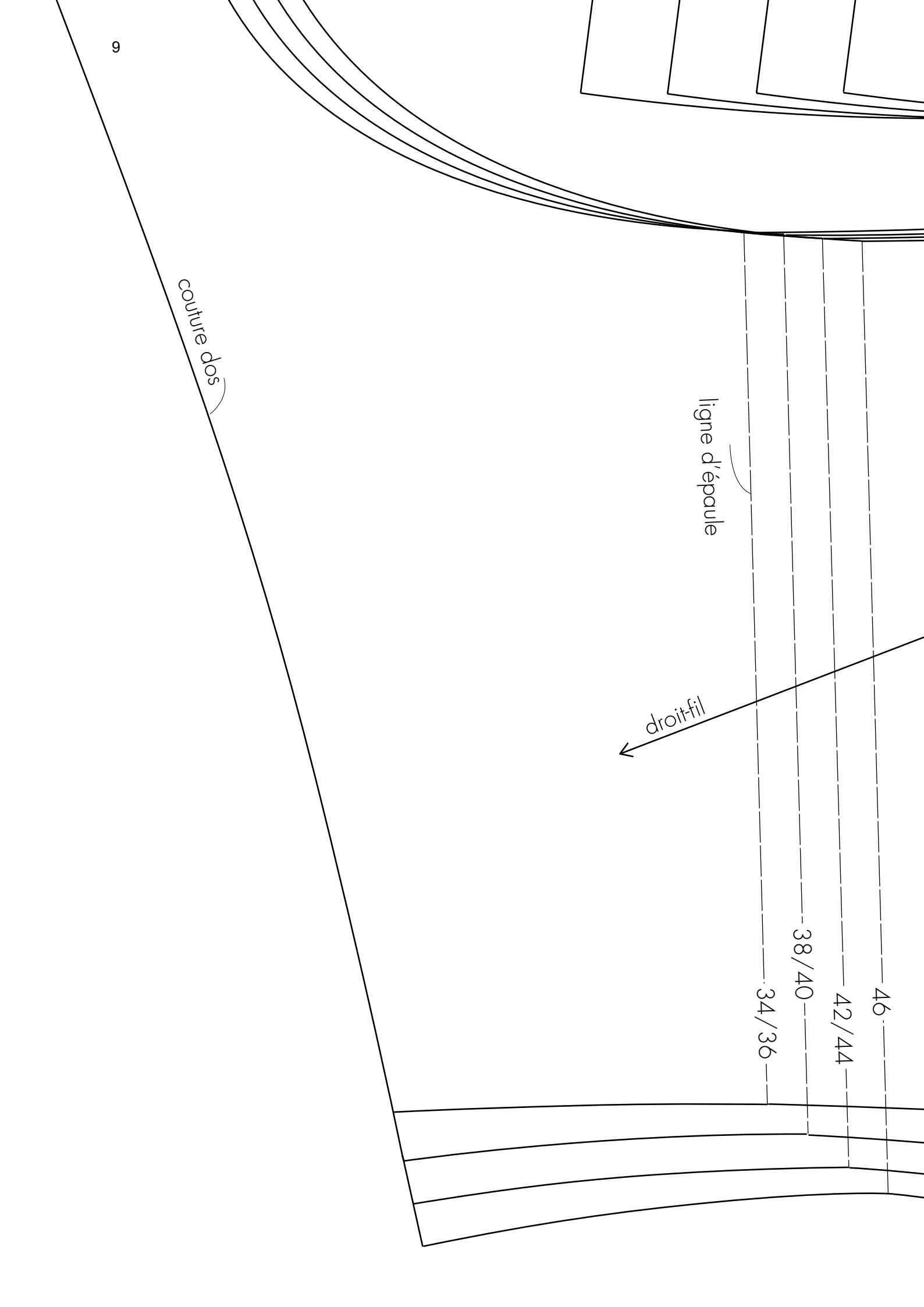


couture dos

ligne d'épaule

droit-fil

46
42/44
38/40
34/36



Esprit guerrier
Empiècement

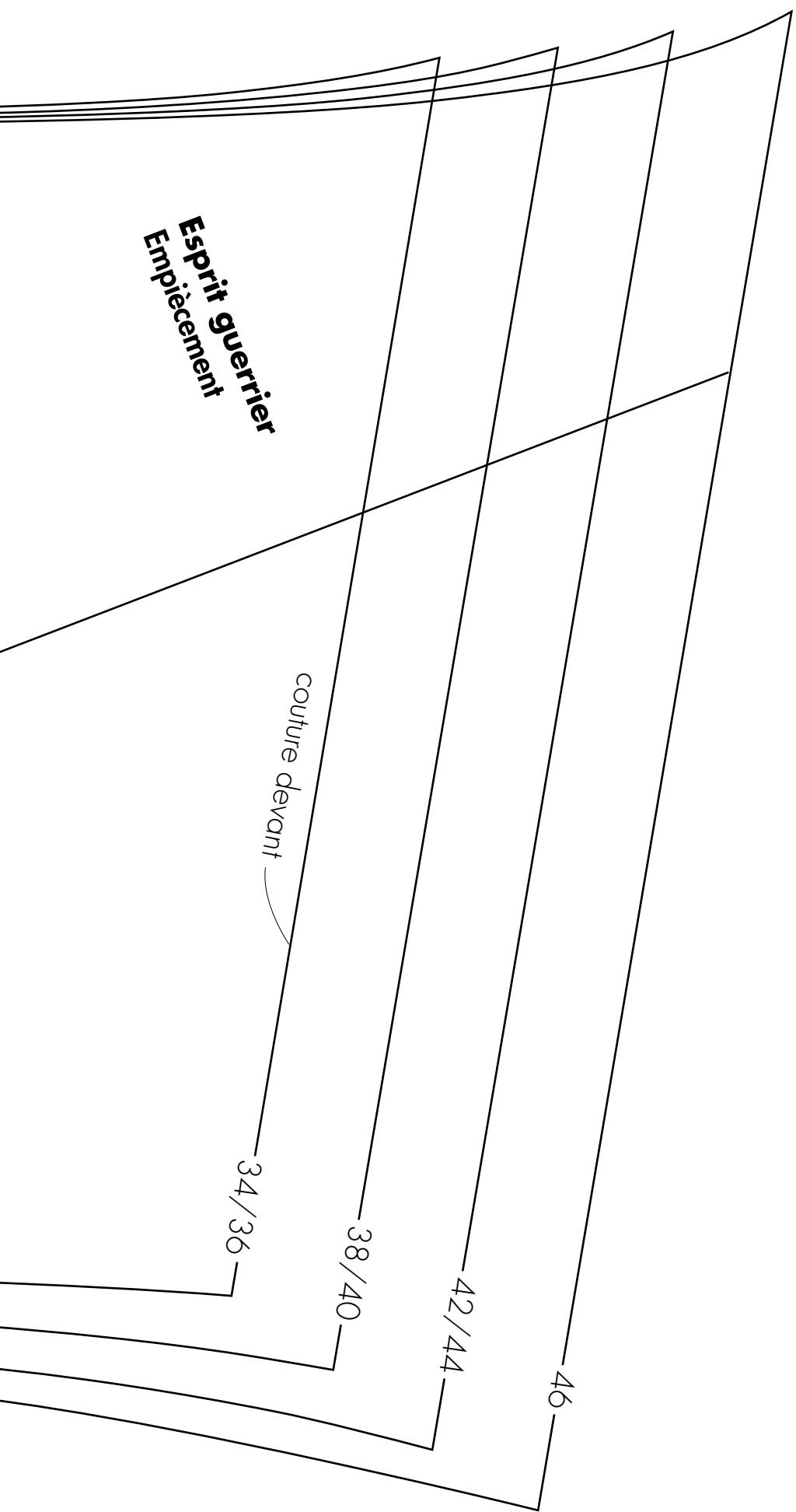
couture devant

34/36

38/40

42/44

46



extérieur

pliure
milieu dos

doublure

extérieur

